

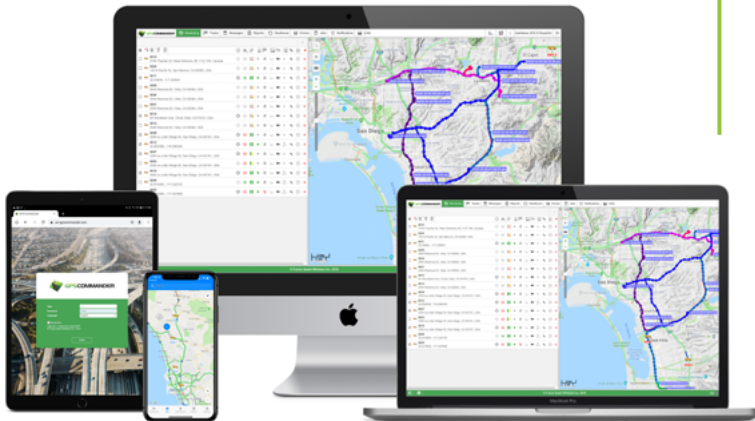


SCOUT Mobile VIDEO Solutions

Industrial-grade durability and performance for long-term value:

- » Reduce liability risk
- » Lower operating costs
- » Increase driver safety
- » Improve fleet efficiency

“See it, hear it, understand it, as it really happened”



SDV-45 SHD

“With **GPS Commander™**, we’ve gained a whole new level of visibility into our tow operations. The Scout system provides us with real relief from potentially serious claims by giving us the real facts, as they occurred on the ground.

Bob McGann | President
McGann and Chester Towing
Pittsburgh, PA





OVERVIEW

The **Scout SDV-45 SHD** is an industrial grade, ruggedized Mobile Digital Video Recorder (MDVR) specially configured for improving the security & safety of tow wrecker operations.

The **SDV-45 VSS (Vehicle Security System) Package** includes 4 HD cameras, in order to provide 360 degrees of coverage around the vehicle's exterior. When the vehicle is in operation, 100% of its activities are stored in High Definition video on the unit's integrated storage medium—this recorded information can be readily accessed by USB transfer, using the in-cab touch-screen LCD display, or by using Scout's integrated WiFi capability and supervisor smartphone app. All recorded video history is stamped with time, date, GPS, speed, as well as input activity, such that as it is played back, the user will also see the real-time vehicle location, PTO status, time of occurrence, etc.

EFFICIENCY

Scout combines the simplicity of cloud-based telematics monitoring with extended video forensics history to provide superior real-time and historical insight and analysis.

By using the latest video compression technology, called H.265, Scout provides **nearly doubles the amount of live streaming that can be achieved in a given size cellular data plan.**

At the same time, it can store nearly twice the history of most competitive products, an important aspect in towing fleets where events that occurred well in the past suddenly come to light, requiring review. As an example, with 4 connected HD cameras, operating 10 hours per day, **the Scout SDV-45 can store up to 20 days of history with a resolution of 1080p!**



The vast majority of towing fleets in North America already employ GPS tracking service as a productivity and customer enhancement tool. In most cases, the monthly costs for these types of GPS tracking systems fall into the **\$20.00 to \$30.00 range per vehicle.**

This makes it very compelling to migrate to a Command Vision system, whose monthly service costs will be very similar, yet provide very significant additional customer service, operational and safety benefits. The resulting decrease in accidents and liability will provide a measurable return on investment and may make the difference between being insurable and uninsurable.

MAIN FEATURES

- » Full HD 1080p Video Resolution
- » Latest efficient H.265 video compression
- » Supports 4 x AHD Cameras and 1 x IPC Camera
- » 256GB x 2 SD cards for extended video history
- » Crash detection and driver behavior monitoring
- » Multiple inputs and outputs for extensibility
- » Wide -40 to + 55 C operating temperature range
- » Integrated GPS, WiFi and 4G LTE Modules
- » Rugged, vibration resistant metal construction
- » GPS Commander telematics cloud-ready

EXCEPTIONAL VALUE

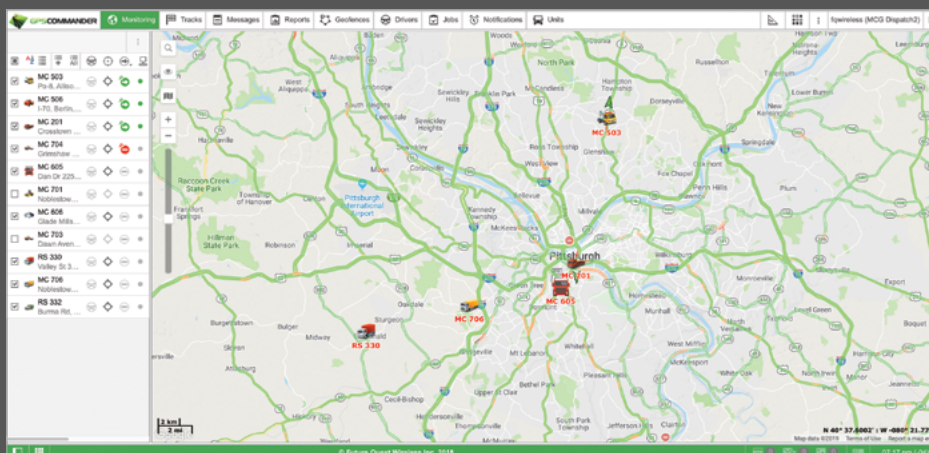


Cloud-based GPS tracking and telematics solutions, backed by responsive, 24-hour support.



GPS COMMANDER CLOUD

The **Scout SDV-45** is fully integrated to GPS Commander, our powerful cloud-based dashboard that let's towing fleets manage all aspects of their fleet. Simply log in from any PC browser or the Supervisor smart-phone app to manage your drivers and vehicles.



GPS Commander is packed with the modern telematics features most towing fleets are used to, including Google Maps with live traffic, geo-fencing, configurable alerts and a wide range of reports.

A full **12 months of GPS tracking playback history** is included, as well as a powerful, modern vehicle maintenance scheduling and expense tracking system.

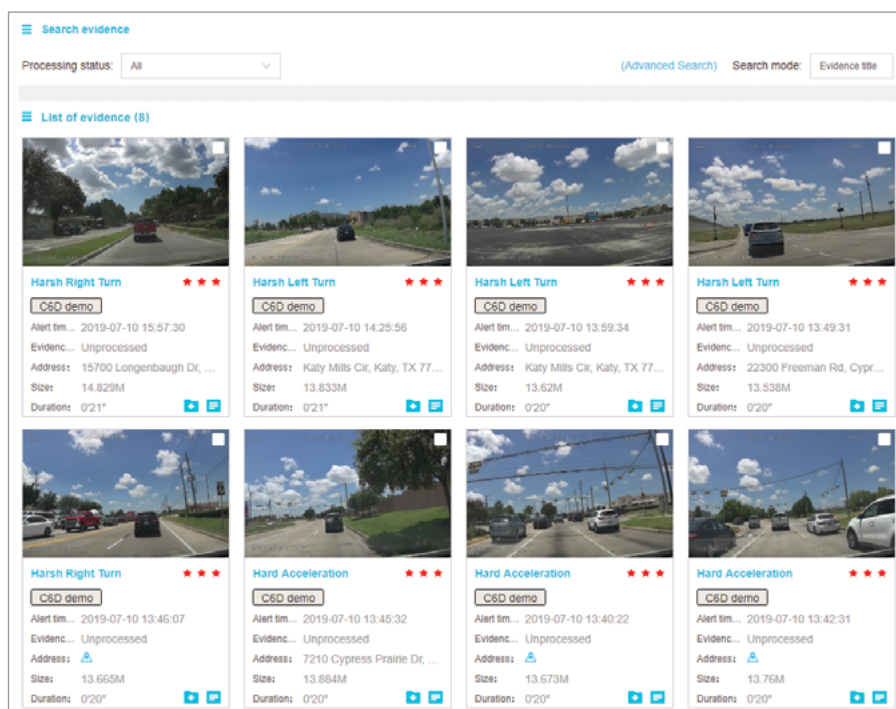
GPS Commander's ability to stream live video and audio, from any camera(s) at any time, gives you a seat in the "cockpit" during critical events for remote assistance.



COMMAND VISION

The **Command Vision dashboard** allows for real-time camera viewing and listening of streams, as well as the capture of picture snapshots from any camera on command.

Predefined events will cause images or video and audio to be automatically downloaded under harsh driving, as well as input events, such as PTO.



Exceptional expansion capability to accommodate add'l requirements due to insurance regulation changes.



EXPANDABILITY

The Scout SDV-45 system with GPS Commander has exceptional expansion capability to accommodate additional requirements that may come about as a result of changes to insurance regulations. One additional camera can be added at any time:

For example, in addition to the 2 side cameras, front facing and rear facing cameras, it can be prudent to add a 5th camera under the rear bed of a rollback to observe for vehicle fascia and bumper damage when loading and unloading. In heavy duty operations, an additional camera on a portable light bar can provide important information regarding scene management and during towing. An array of accessories are available including Driver ID, Fuel Theft, Fuel Card Integration and Passenger Detection.

As noted above, **the Scout SDV-45 supports full AI-powered video telematics expansion, with the addition of 2 optional packages:**

AI-POWERED SAFETY OPTIONS

ADAS MODULE	DSM MODULE
Lane Adherence	Driver Fatigue Warning
Following Too Close	Driver Smartphone Detection
Pedestrian Warning	Driver Smoking Detection
Collision Avoidance	Driver Distraction

We've used GPS Commander tracking for several years in our fleet of New York wreckers. With Scout video units, we've gained a whole new level of protection for our drivers, customers and our company.

Jan's Med A Car
Hillburn, NY

SCALABILITY

Scout systems can be scaled to fit your needs and budget. Scout models can be mixed and matched on the same system – for example: SDV-25 dual dash cams could be used in your light service vehicles with forward and reverse cameras, combined with SDV-45's in your wreckers and SDV-65's in your heavies and rotators.

Any Scout model can be provided without GPS tracking and live streaming to minimize monthly service costs.

Start off with a stand-alone mobile video system that protects your operation by giving you **360 degrees of coverage, 100% of the time any vehicle is in operation.** One call is all it takes to activate the live tracking and streaming service. Have an existing GPS contract? Wait until its up, then activate GPS Commander!

Once your system is live, you may change your plan to a larger or smaller data plan at any time!

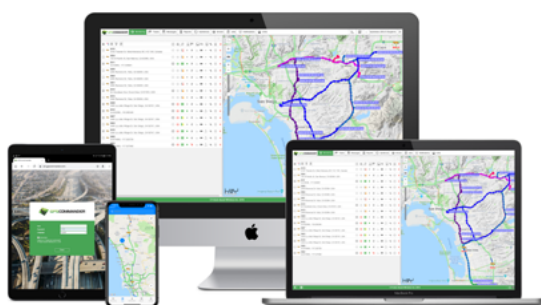


FEATURES | BENEFITS

- » Mitigate risks by using actual situations to provide more effective training
- » Reduce liability by maintaining accurate evidence of what actually occurred
- » Increase driver safety through improved training, awareness and safer practices
- » Reduce insurance claims by identifying and reducing risky behavior
- » Reduce fleet operating and insurance costs
- » Increase fleet and dispatch efficiency
- » Improved customer service through quicker response and less errors

GPS TRACKING FEATURES	MOBILE VIDEO FEATURES
GPS tracking with 10 second updates	2 TB On-board storage of operations
Web-based cloud dashboard	360 degrees of storage for up to 46 days
Google maps with live traffic	Videos are live stamped with location, driving behavior, PTO, speed, etc.
12 months of GPS playback & report history	Support for up to 8 high definition cameras
Full slate of reports including IFTA	Live streaming of video on demand from any camera(s) at any time via 4G cellular data
Scheduled report delivery via email	Capture snapshots from any camera, live at any time, via 4G cellular
On-screen geofence boundary create	Pull up historical video event from the MDVR's hard drive over cellular or WiFi
PTO, idle, speed, geofence alerts	Automatically capture video/pictures to the cloud at a triggered event (speeding, harsh driving, PTO
GPS playback with Google Street View	Pull up a report of any such captured video event that occurred over the past 3 months
Road specific speed alerts	Opt. touch screen driver display w/auto switching shows side camera when turning & back-up camera
Supervisor smartphone apps	One-touch download of Driver Report Card PDF of any triggered event in Evidence Dashboard
Complete vehicle maintenance	Optional ADAS Auto Driving Assistance
Optional ELD capability fully integrated	Optional DSM Driver Safety Management

Scout SDV-45 is fully integrated to GPS Commander, our powerful cloud-based dashboard that lets towing fleets manage all aspects of their fleet. Simply log in from any PC browser or the Supervisor smartphone app to manage your drivers and vehicles. In addition to the wide range of included GPS tracking features, GPS Commander lets you stream live and historical video, audio and pictures from any vehicle.



GPSCOMMANDER
a division of FQ WIRELESS

GPS Commander™ is a division of FQ Wireless. For over 20 years we have provided telematics solutions to organizations all over the world. GPS Commander is an industry pioneer, with exceptional experience, providing best-in-class technology combined with great pricing, no contracts, free training and accessible 24x7 live Help Desk support. Our cloud-based platform combines the GPS tracking and sensor capabilities from hundreds of integrated device models with easy-to-use web and smartphone interfaces that include Google Maps with live traffic and street views as standard. Choose from a wide selection of integrated modules, including ELD systems, vehicle maintenance, dispatching and the broadest choice of connected dash cams and mobile video devices in the market.